

EXELE TopView Software Data Sheet

Operating Systems

Windows 7/8/10 (32 and 64-bit)
Windows Server 2008/2012/2016 (32 and 64-bit)

Data Sources:

Process & Automation

- **TopView OPC/SCADA:** monitors value and array data from OPC-DA or OPC-HDA Servers. OPC Servers are available for most PLCs, SCADA Systems, DCS's, and Historians. *TopView OPC is OPC Certified*
- **TopView OPC Alarms and Events:** OPC A&E Servers. Emerson DeltaV, ICONICS, GE iFIX, Honeywell Experion, Citect, and others
- **TopView PI/PIAF:** monitors OSIsoft PI tags and AF attributes
- **TopView Canary Labs:** monitors tag data from Canary Labs Enterprise Historian

Databases

- **TopView SQL :** monitors data from ODBC and OLEDB databases, files, and spreadsheets

IT: System Performance & Network Ping

TopView PerfMon: Microsoft Windows System Performance and Network Ping Response

General

- Runs interactively or as a Windows Service
- Multi-level Tag Groups for categorizing and filtering monitored tags and alarms
- Verbose Application, Alarm and Notification logs
- Alarm comments/annotations
- Monitor and alarm result of calculation/expression
- Audit change log, detailed change reports, and automatic backup to files and SQL Server
- Hot failover option for alarm engine and clients
- Performance and health monitoring with notification
- Configuration, Notification, and Recipient reports

Alarm/Event Detection

- Configurable value, status (good, bad, OPC uncertain, PI questionable), timestamp-age, value flat-line, change, trend up/down alarm conditions
- Complex alarm conditions involving multiple tags and conditions
- Alarm logic and function scripting with VB.Net and optional access to external libraries
- Monitor and detect abnormal alarm activity (active alarm counts, frequency, flooding)
- Delay of alarm unless condition is active for a period of time
- Expiration of alarm after a period of time
- Alarm limit value dead bands
- Blackout period for alarm frequency filtering
- Suppress alarm detection if associated equipment not running (state-based alarming)
- Suppress alarm detection if status of tag not good
- Flexible alarm condition scheduling (days/time-of-day, exclude date ranges)
- Fixed and dynamic limits (use tag values as limits)
- Define alarm and notification settings once for multiple tags (templates and inheritance)
- Tag group/category alarms
- Alarm time zones for accurate time reporting
- Custom alarm and return to normal messages
- Escalation of unacknowledged or persistent alarms through multi-step escalation templates
- Disable and snooze alarms (alarm shelving)
- Suppression of startup alarms
- Launch other applications in response to alarm conditions
- User comments to document each set of alarm limits
- Automate configuration changes to tags, alarm conditions, and alarm limits (scripts or custom code)

Audible Alarms and Notification

- Audible text-to-speech and WAV file alarms
- Notify on alarm, return-to-normal, and acknowledge
- E-mail notification: SMTP with reply acknowledge (POP3), SSL support, attachments, and failure retry
- SMS Notification: GSM cellular modem delivery of SMS text messages with reply acknowledge
- Modem notification: TAP protocol for alphanumeric pagers, cell phones and direct-to-pager (numeric)
- Voice notification: audible text-to-speech to any phone using VOIP or TAPI modems/devices.
- Custom notification: can be developed by users
- SNMP Traps: send alarms as v1 and v2 SNMP Traps
- Custom message content and email subjects
- Message templates for detailed message content and formatting (text or HTML)
- Escalate persistent or unacknowledged alarms
- Prioritized message delivery
- Output points (write to tags) upon alarm, return-to-normal, and alarm acknowledgement events
- Contact lists and flexible recipient scheduling
- Active Directory support for contact information
- Dynamic recipients (use tag values as recipients)
- Local/Remote Windows Notification Area icons and messages
- API for programmatic changes to contacts, schedules, and notification recipient groups

Bi-direction Email/SMS communication

- Reply to received email/SMS text notification message to acknowledge alarms
- Send request email/SMS to retrieve current information for any monitored point
- Send request email to retrieve customized Snapshot Reports of current values and alarms

Reports, Feeds, and Events

- HTML Snapshot reports of current values/alarms with local file output, publishing, and email
- Ad-hoc and Scheduled alarm history reports with local file output and email
- Alarm RSS Feed generation and publishing
- "EventHooks" for user-written event handling

Remote Access and Acknowledge

TopView offers multiple options for remotely accessing TopView and acknowledging alarms:

- Mobile Web App for Apple iOS, Android, Windows Phone, Blackberry (phones and tablets)
- Remote Viewer client for Windows Desktop
- 2-way Email/SMS communication for alarm acknowledge and current state information requests
- Notification direct-link to acknowledge web page
- Remote Dial-in voice menu from any phone

Remote Alarm Console

- TopView *Remote Viewer* provides alarm monitoring, alarm management, audible alarms, and alarm acknowledgement in a rich, yet thin client.
- User-specific, customized views of alarm activity
- Query and filter alarm history, create alarm reports
- Interactive alarm analytics (tables and graphs)
- Permissions to view and acknowledge alarms
- Custom fields and hot links for each monitored point (instructions, documents, web URL, other apps)

Mobile Web App

- Apple iOS, Android, Windows Phone, Blackberry (phones and tablets) and desktop browsers
- Monitor values and alarms, acknowledge alarms
- Query alarm history and identify bad actors
- Real-time alarm/value updates pushed to clients
- Optional user logon security and permissions

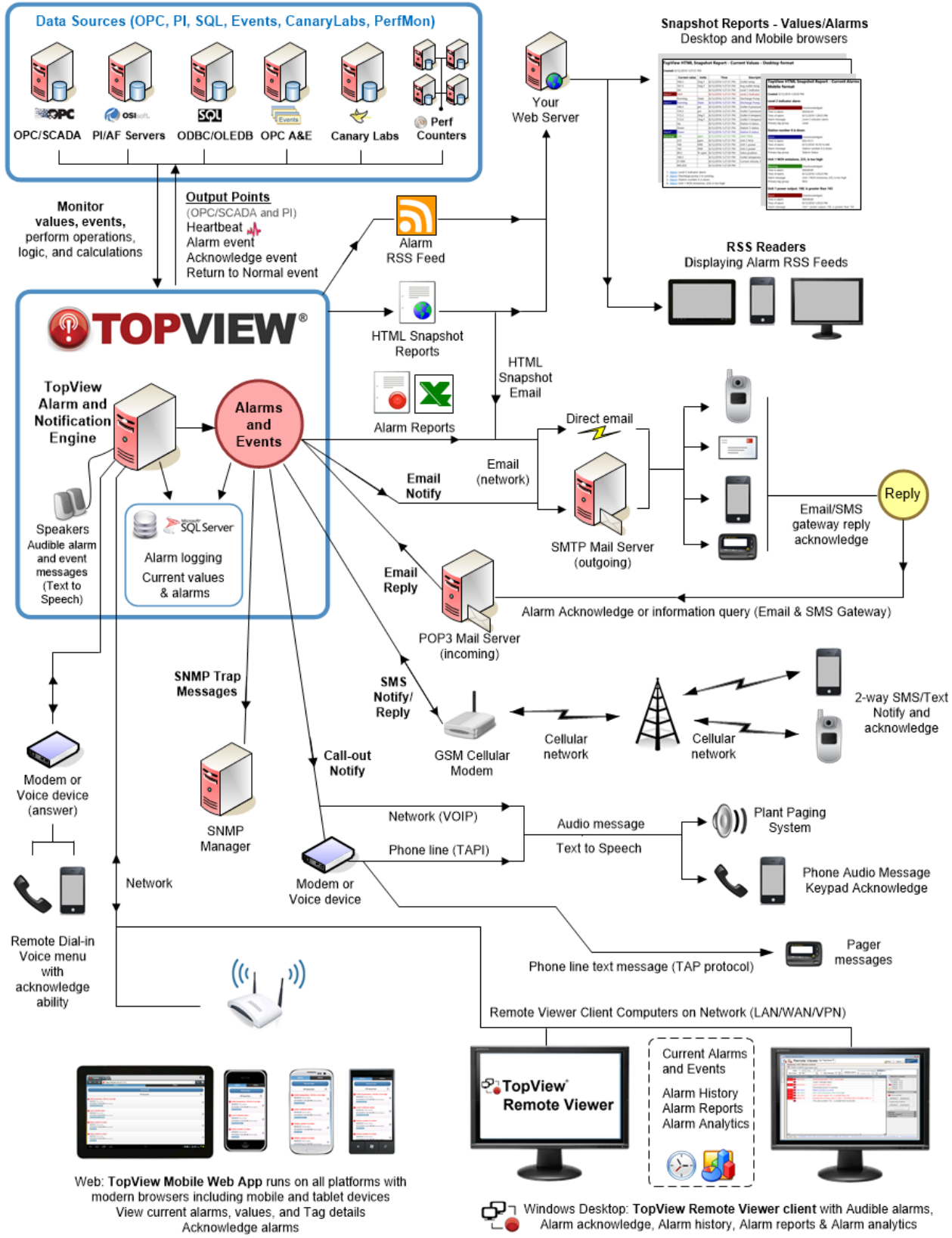
Configuration and Management

- Intuitive Configurator for users of all levels
- Bulk configuration of monitored points, alarm conditions, and recipients in Excel
- Administrative tools for real-time monitoring of alarms, notification queues, performance, and logs

SQL Server Output (optional)

Provides additional features and easy integration

- Alarm logging (Alarms table) enables alarm comments/annotations and provides better reporting performance and external access
- Current Values/Alarms (Snapshot table) provides current state information to external applications



Web: **TopView Mobile Web App** runs on all platforms with modern browsers including mobile and tablet devices
View current alarms, values, and Tag details
Acknowledge alarms

Windows Desktop: **TopView Remote Viewer** client with Audible alarms, Alarm acknowledge, Alarm history, Alarm reports & Alarm analytics



Visit exele.com for more information and free download
Exele Information Systems, Inc • +1 -585-385-9740 (USA)