



Highly configurable tool for the storage and retrieval of tag data

EXELE's Manual Input is a highly configurable tool that allows OPC or PI tag values to be stored and retrieved at client workstations. It allows you to easily configure various screens for viewing, storing and deleting tag values. Each screen configured for viewing has many mode options from read-only to read-and-store.

### Key Features

- **Audit File selectable:** different audit files may be used for each group of tags being configured.
- **Time Stamp Lockout:** tags can be configured individually to have a pre-configured timestamp used for storing values. This time can be LOCKED out so it can not be modified.
- **Time Stamp Limit:** each group of tags can be configured to only allow the user to save within a certain time limit.
- **Prohibit Time Stamp Limit Violation:** each tag can be configured to allow an override on the timestamp limit if used. If not used, the user will be able to override the limit after notification of violation.
- **Tag Description Override:** each tag can display only a description (from PI database or custom descriptor) or both tag and description.
- **Engineering Unit Override:** the engineering units displayed can be from the PI database or a custom units.
- **High/Low limits:** can come from PI database or custom values.
- **Limit Violation:** each tag can be configured to either notify or prohibit lower or upper limit violations.
- **Conversion Codes:** you can apply pre-configured conversions to individual tags.
- **String Tags:** capability of storing and retrieving values for string tags.
- **PI-BatchView™:** using PIBatchView ActiveX control, a query dialog lets you search the PI batch database and Unit/Alias table. This will help find batch start and end times used for storing and retrieving PI values.

**Note: OPC version requires an OPC HDA (Historical Data Access) Server**

### Auditing

Methods available for tracking changes made to tag values:

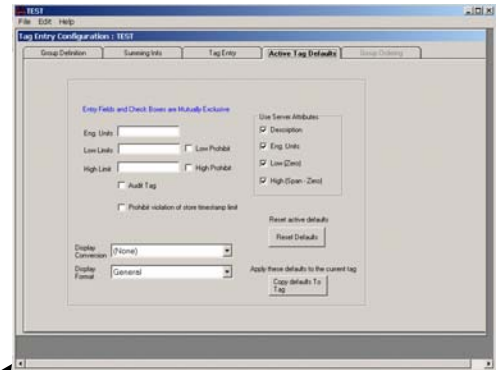
- **Audit:** Manual Input writes information directly to the audit file specified.
- **Secure Audit:** Manual Input exchanges information with a server that writes information to the audit file.



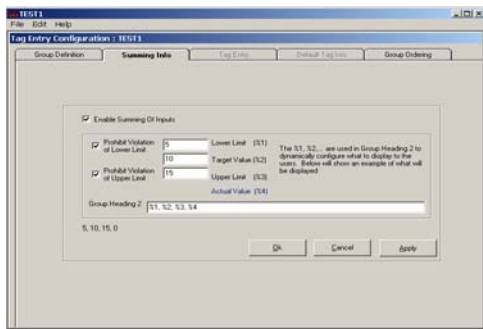
Group Definition



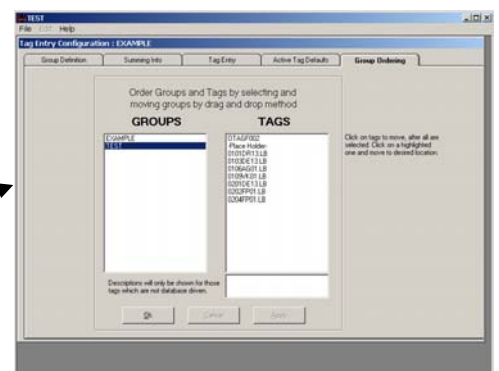
Tag Entry



Active Tag Defaults



Summing



Group Ordering

